

# MONTHLY MEMBERSHIP PROGRESS REPORT

LOCATION AUSTRALIA

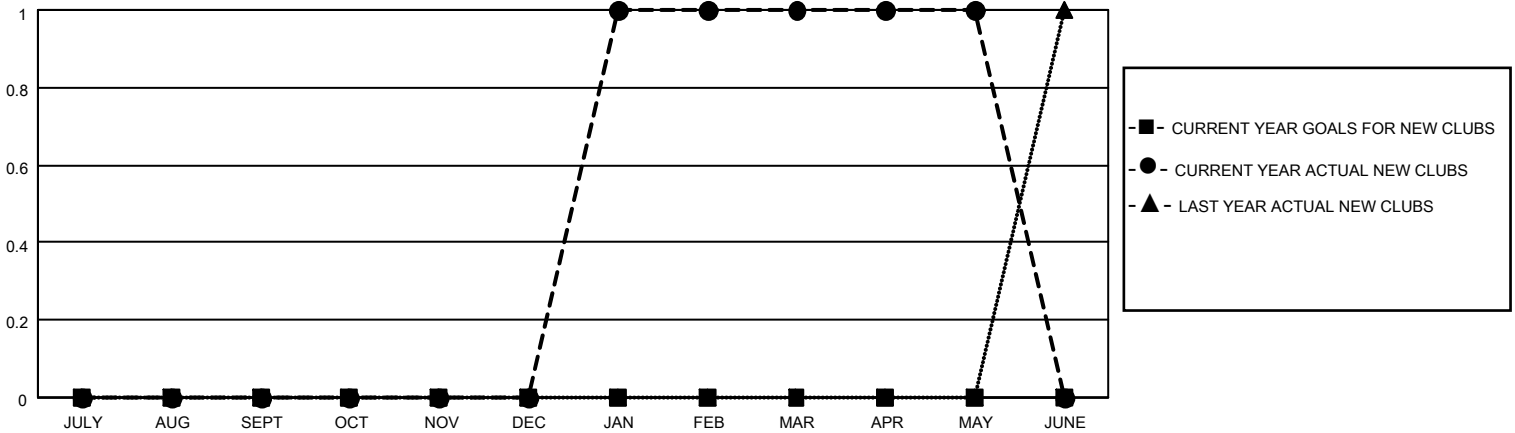
District 201V5

Results as of: 5/31/2022

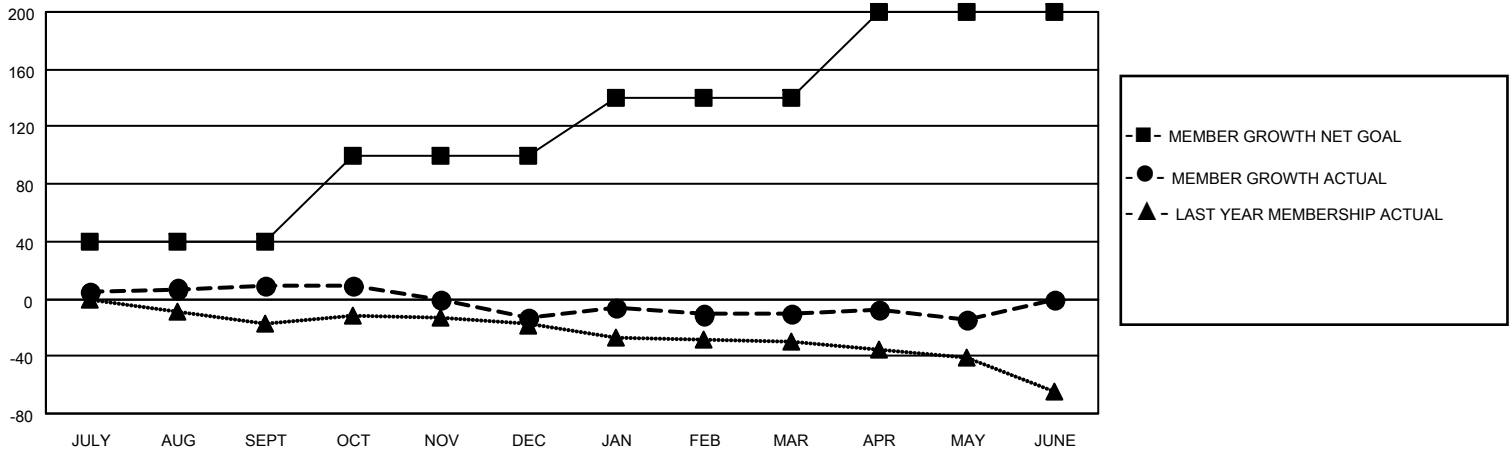
Clubs			
RESULTS FOR 2021-2022			
QUARTER	NEW CLUB GOAL	NEW CLUBS	DROPPED CLUBS
JULY/AUG/SEPT	0	0	0
OCT/NOV/DEC	0	0	1
JAN/FEB/MAR	0	1	0
APR/MAY/JUNE	0	0	0

Members			
RESULTS FOR 2021-2022			
QUARTER	MEMBER GROWTH NET GOAL	MEMBER GROWTH ACTUAL	DROPPED MEMBERS ACTUAL (including transfers)
JULY/AUG/SEPT	40	34	19
OCT/NOV/DEC	60	17	38
JAN/FEB/MAR	40	47	43
APR/MAY/JUNE	60	23	22

**GOALS AND ACTUAL NEW CLUBS CUMULATIVE**



**GOALS AND ACTUAL MEMBERS CUMULATIVE**



<b>DROPPED CLUBS: 1</b>	
<b>DROPPED MEMBERS</b>	
DECEASED	7
CLUB CANCELLED	0
OTHER	115
<b>TOTAL</b>	<b>122</b>

37 CLUBS OF 65 ADDED 1 OR MORE NEW MEMBERS

[CLICK HERE FOR CUMULATIVE MEMBERSHIP DATA](#)

<u>GENDER DISTRIBUTION</u>	
MALE	753 (63.54%)
FEMALE	431 (36.37%)
NON BINARY	0 (0.00%)
PREFER NOT TO ANSWER	1 (0.08%)
<b>TOTAL FAMILY UNIT MEMBERS</b>	<b>138</b>
<b>FAMILY MEMBERS PAYING HALF DUES</b>	<b>71</b>